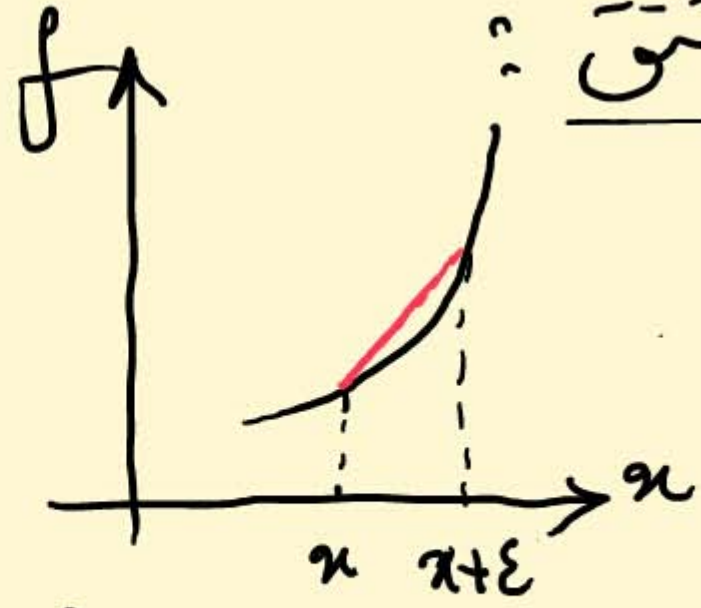
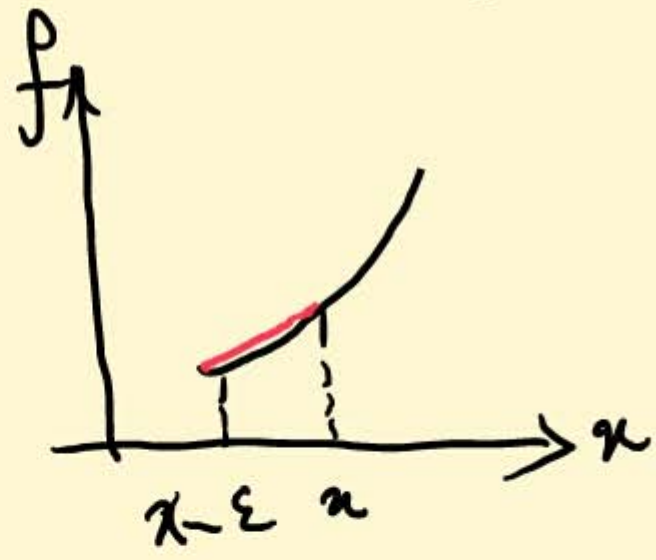


تعريف مشتق

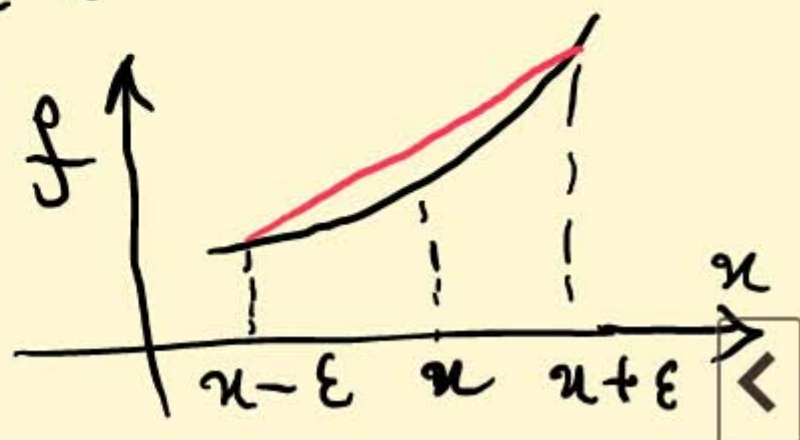
$$f'(x) = \lim_{\epsilon \rightarrow 0} \frac{f(x+\epsilon) - f(x)}{\epsilon}$$



$$= \lim_{\epsilon \rightarrow 0} \frac{f(x) - f(x-\epsilon)}{\epsilon}$$

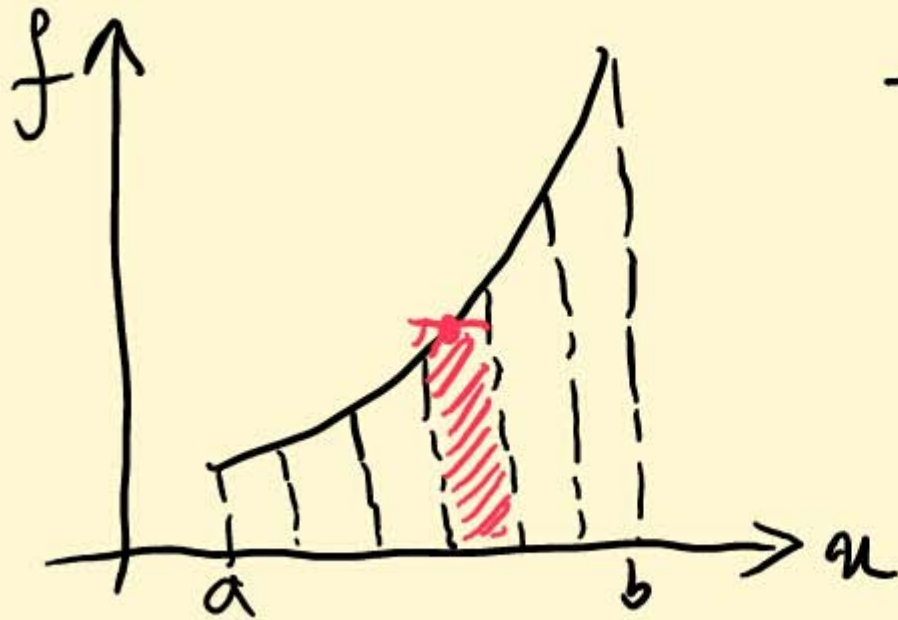
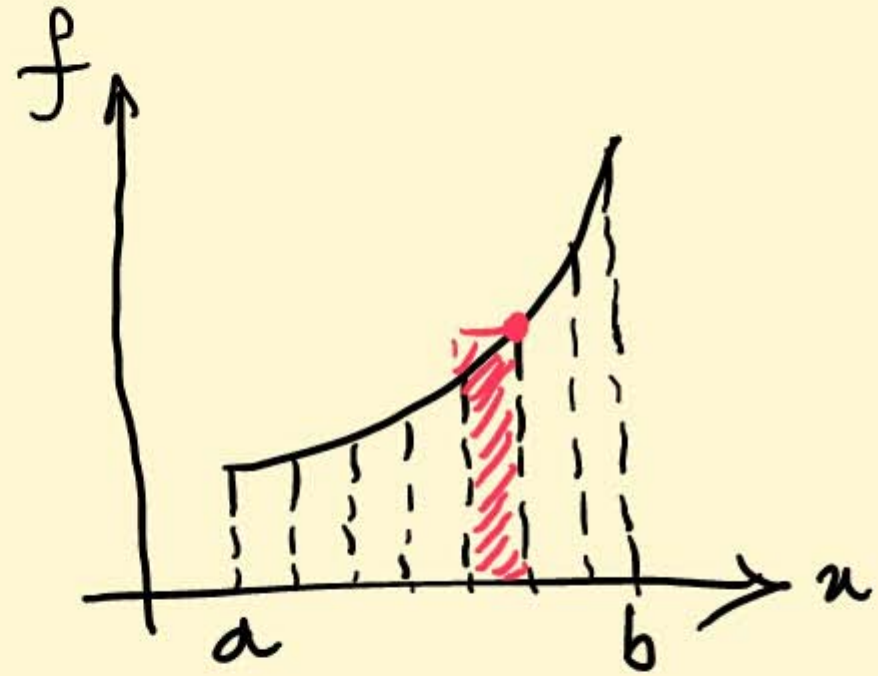
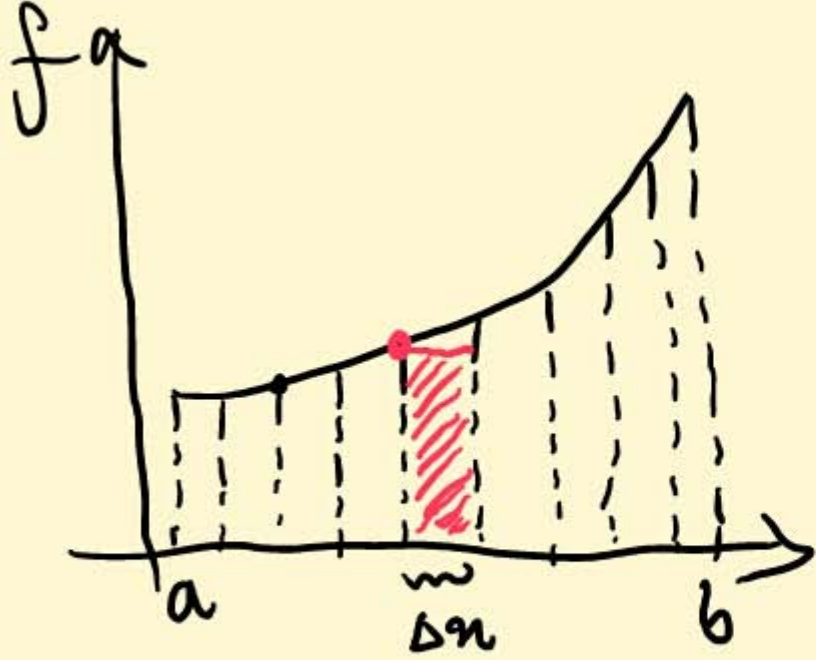


$$= \lim_{2\epsilon \rightarrow 0} \frac{f(x+\epsilon) - f(x-\epsilon)}{2\epsilon}$$



1b

اشرف



(2)

